

Accessories

UNDERSTRUCTURE: This consists of pedestals, stringers & Screws made out of zinc-coated steel / hot dipped galvanized. Available in different heights & thickness as specified.

VENTILATION PANEL: Top surface of these panels are finished with antistatic laminate & beading. Each panel has 22 mm dia. holes laid out to provide 40% open area for air circulation. A special metallic damper is attached on the underside of the tile for controlling the airflow (adjustable by a key from the top without opening the panel) These panels are recommended for server rooms, where under-floor precision air-conditioning units are installed.

PANEL LIFTER: A small handy tool for removing & re-placing the tiles during maintenance operations.

POP-UP BOX: A concealed box with a flip top, for electrical sockets placed as a service point in a server room / near racks, etc.

GROMMETS: These can be made out of high grade PVC or Fiber. Available in Square & Round Shapes. Beside controlling the air leakage, grommet adds to the finished look of the tiles.

VISION PANEL: The Vision panel can be used for viewing critical points that need frequent monitoring & design for normal walking load only. (300 * 300mm / 450 * 450mm / 500 * 500mm.)



GROMMET



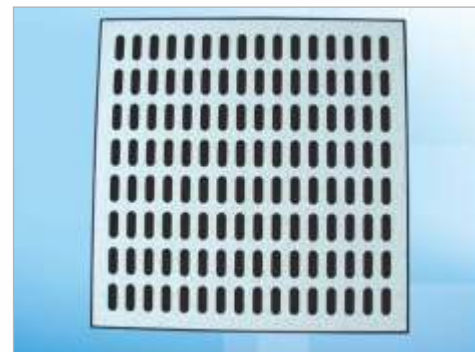
OUTBOX



PEDESTALS



UNDERSTRUCTURE



VENTILATION PANEL



VISION PANEL



SUPERSiL
Since 1983



SUPERSIL ARCHITECTURAL PRODUCTS PVT. LTD.

Head Office: B-502-504, Dev Aurum Commercial, Opp. Madhur Hall, Anandnagar Cross Road, Prahladnagar, Ahmedabad-380015, Gujarat - India. Tel: +91 79 4800 7900/01/02, Email: sales@supersil.in Web: www.supersil.in

PLANT-1

46-48, GIDC, Ganeshpura, Modasa-383315, Dist: Aravalli, Gujarat, India.
Tel: +91 2774 242518, Email: mfg@supersil.co.in

PLANT-2

113, Gate No. 1, B/h Hanuman Temple, GVMM, Odhav, Ahmedabad, Gujarat - India.
Tel: +91 79 2290 2000, Email: plant@supersil.in

SUPERSiL is registered trademark of Supersil Architectural Products Pvt. Ltd., Ahmedabad, Gujarat-India.

Follow us:   

ACCESS FLOORING SYSTEMS

A product by **SUPERSiL**



SUPERSiL

Ahmedabad | Ankleshwar | Aurangabad | Bangalore | Bhuj | Chennai | Cochin | Himmatnagar
Hyderabad | Indore | Mumbai | Nagpur | Nashik | Pune | Raipur | Surat | Udaipur

Laminated Steel Cement Tile (HPL)

Tile is made out of high grade cold roll steel sheets, available in 600 x 600mm x 35mm thickness. Top & bottom plate joint with 100 spot welding & cavity is filled with light weight cement for solid load bearing capacity. It is coated on all sides with epoxy powder coating for long life. Top finish is with high pressure antistatic laminate or PVC. Four edges are cover with black conductive edge beading for conductivity. These tiles are placed on to the steel understructure pedestal & stringer (Bolted Stringer System) at required height. Finish surface is anti-skid for walking comfort & safety. It is fire rated non-combustible material. Available in Different models to suit low & high weight requirements. The system is fully accessible & panels can be change anywhere in any direction.



Application : Control Room / Switch Rooms / Data Centre etc.

Bare Steel Cement Tile

This system is the modern concept in the flooring for large high-tech open offices for managing different services (data, power & voice cables, fire pipes, under floor A/c systems, etc...). The system consists of steel cement tile, steel pedestals & PVC cap. Panels are made out of cold-roll steel sheets which are punched; spot welded & epoxy powder coating. Inside of panel is filled with formed cement. Holes are made at four corners for locking the tile to the pedestal with screws from top. Anti-vibration caps are placed between the pedestal top tile for walking comfort & low noise. This system can be directly installed on the RCC slabs in new building with the minimum height as low as 100mm to save the space & accommodate all services. Floor covering can be done by carpet or PVC tile.



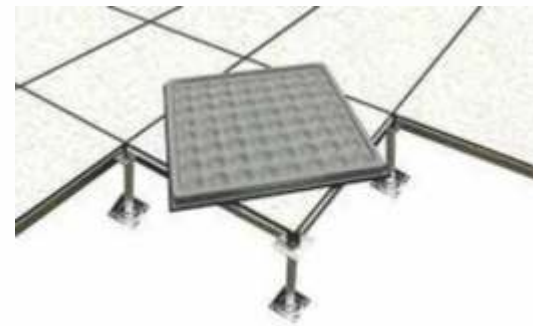
Application : Open Office Area , Hotel , Conference Room etc.



Panel Construction:

Supersil make Laminated Panel/Tile of Steel Welded construction with an enclosed bottom pan with uniform pattern of modular pockets of 64 hemispherical cones. The panel has to be epoxy coated for filled with non-combustible cementitious compound. Top Covering with high Pressure Antistatic hot Pressed Laminated white colour with grey streamlet pattern. Edge bonded with black conductive PVC beading.)

Panel Size : 600mm*600mm
 Top Steel Thickness : 0.6mm
 Bottom Steel Thickness : 0.7mm
 Panel Overall Thickness : 35mm
 Point Load : 360 Kg/25mm Sq.
 Uniformly Distributed Load : 1250 Kg/M2
 Fire Rating : Class "O".



Pedestal Construction:

All Steel Construction Coated with anticorrosive zinc coating.
 Base Plate : 95*95*2mm thick
 Top Plate : 75*75*3mm thick
 Pedestal Pipe : 25mm dia with 1.5mm wall thickness.
 Pedestal Top Rod : 20mm dia threaded rod with check nut.

Stringer:

All Steel Construction Coated with anticorrosive zinc coating
 Size: 20*30*0.8*575mm long

Panel Construction:

Supersil Make CCS 700/800 Grade Bare Panels of steel welded construction, with an enclosed bottom pan with uniform pattern of modular pockets of 64 hemispherical cones .The panel has to be epoxy coated for protection from corrosion and cavity formed by the top and bottom plate is filled with Non-combustible Cementitious compound.

Panel Size : 600mm x 600mm
 Top Steel thickness : 0.6mm
 Bottom Steel Thickness : 0.7mm
 Panel Overall Thickness : 31mm
Top Finish : BARE
Concentrated Point Load : 311/355 Kg Over 25 mm square.
Uniformly Distributed Load : 1111/1270 Kg/M2

Pedestal construction:

All steel construction coated with anticorrosive zinc coating.
 Base plate : 95mm x 95mm x 2mm thick
 Top Plate : 75mm x 75mm x 3mm thick
 Pedestal Pipe : 25mm dia with 1.5mm Wall thickness welded to base plate.
 Pedestal Top Rod : 20mm dia with check nut welded to top plate.

Selection Chart

Panels	Load in KGS			Rolling Load KG 10000 - 10 times	Impact Load (KG)
	>360	>1600	>1080		
SAF - 800	>360	>1600	>1080	270-360	>70
SAF - 1000	>450	>2300	>1350	360-450	>75
SAF - 1250	>560	>3300	>1680	450-560	>80
SAF - 1500	>670	>4300	>2010	560-670	>85

* Also Contact us for Stronger Panels than SAF - 1500.

* Also Available Vitrified Tiles (8-10 mm) top finish
 Woodcore & Calcium Sulphate Panels.

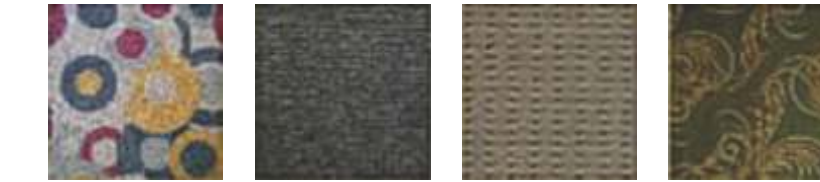
Bare Steel Cement Tile

SUPERSIL access floors and understructure systems cater to a wide range of building applications, from offices, computer, power utility rooms, laboratories etc.

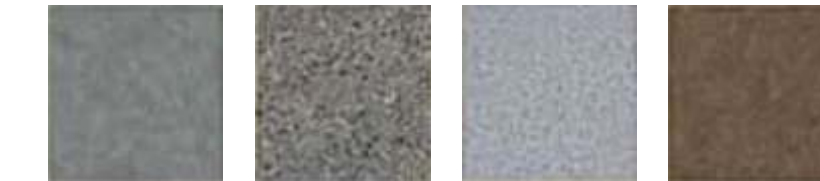
High Pressure Laminates



Carpet Tiles



Anti - Static Vinyl



Wood Finishes



Marble / Ganite / Stone

